

AMHR2 A-482G ToolSet™ for LightCycler™

(Anti-Müllerian Hormone, FSH responsiveness, in vitro – Fertilisation, rs2002555)

Lyophilized ToolSet for PCR using the LightCycler™ Instrument. Licensed by Roche Diagnostics GmbH

Order#: AMHR2 -482 - 16

1 ToolSet for 16 reactions

Store at 4°C, protected from light.
Exposure to light may especially damage
the OligoTool™ tube (vial with red cap).

For use with LightCycler-DNA Master Hybridization Probes, 10 x conc. (Roche Cat.No.: 2 015 102)

1. ToolSet contents

Vial	Label	Content	Quantity
			AMHR2 -482 - 16
1, Red cap	OligoTool	- lyophilized oligos for PCR - contains mutation detection and anchor probe, primers	For 16 tests Dissolved: 50 µL
2, Green cap	Control	- lyophilized heterozygous DNA	Dissolved: 20 µL
3, Blue cap	Solvent	- to dissolve OligoTool / Control	1000 µL of Solvent

Additional equipment and reagents required but not supplied :
LightCycler-DNA Master Hybridization Probes, 10 x conc. Cat.No.: 2 015 102, including 25mM MgCl₂; LightCycler instrument, LightCycler capillaries, DNA extraction materials

2. Introduction

2.1. Product overview

ToolSet description The ToolSet is specifically adapted for genotyping the AMHR2 A-482G polymorphism by LightCycler PCR with Melting Curve Analysis. Fluorescent detection and anchor probes and the primer pair have been optimized for specific amplification of targets and optimal genotype discrimination.

Control material Heterozygous control DNA, lyophilized.

Storage of ToolSet and Solutions Store at +4°C when lyophilized, protected from light.
The unopened lyophilized ToolSet is stable at +4°C for 12 months from date of manufacture if protected from light. When dissolved store at +4°C for a maximum of 4 weeks, or at -20°C for longer periods (months), protected from light. Avoid freezing and thawing.

3. Preparation for LightCycler PCR

Toolset preparation Dissolve the content of the OligoTool tube (Red Cap) with 50 µl of Solvent.
Dissolve the content of the Control tube (Green Cap) with 20 µl of Solvent.

1. Before opening tubes, centrifuge them quickly.
2. Add Solvent into OligoTool tube and Control tube as above.
3. Recap tubes, vortex gently.
4. Before opening tubes, centrifuge them quickly.
5. Proceed to Reaction Mix preparation.

Primers ? You don't have to add primers.
Probes ? You don't have to add probes.

Reaction Mix Preparation For 1 (One) reaction, prepare the Reaction Mix as shown in the following table :

Reagent	µL
OligoTool AMHR2 -482-16 dissolved	2.8
Solvent AMHR2 -482-16	10.4
MgCl ₂ 25 mM	0.8
Master Hybridization Probes 10x	2
Total Reaction Mix	16
+ Your DNA or ControlAMHR2 -482-16	4
Grand Total	20

Use Master Hybridization Probes 10x and MgCl₂ 25 mM from Roche LightCycler-DNA Master Hybridization Probes, 10 x conc. (Roche Cat.No.: 2 015 102, including 25mM MgCl₂).
For multiple reactions, multiply the indicated volumes appropriately.

Positive Control Always run a positive control with the samples.
Use the dissolved heterozygous Control AMHR2 A-482G-16 DNA (Green Cap).

Negative control Always run a negative control with the samples. To prepare a negative control, replace the template DNA with Solvent (Blue Cap).

Extraction of genomic DNA You can use different Kits for DNA isolation, either with a manual method or with an automated system. The elution buffers should be salt-free. Example : Roche High Pure PCR Template Preparation Kit (Cat.No. 1 796 828)

Application The AMHR2 A-482G ToolSet™ for LightCycler™ allows the detection of the A-482G promoter polymorphism of the AMHR2 gene which affects AMH signalling. The G variant is associated with enhanced Estradiol (E2) levels during the menstrual cycle presumably due to increased FSH responsiveness in the human ovary (Kevenaar M.E. et al. 2007, PubMed ID 17337470).

4. LightCycler Settings and Experimental Protocol

Denaturation

Cycle Program Data	Value
Cycles	1
Analysis Mode	None
Temperature Targets	Segment 1
Target Temperature (°C)	95
Incubation time (s)	30
Temperature Transition Rate (°/s)	20.0
Secondary Target Temperature (°C)	0
Step Size (°C)	0
Step Delay (Cycles)	0
Acquisition Mode	None

Amplification

Cycle Program Data	Value		
Cycles	60		
Analysis Mode	None		
Temperature Targets	Segment 1	Segment 2	Segment 3
Target Temperature (°C)	95	55	72
Incubation time (s)	5	10	5
Temperature Transition Rate (°/s)	20.0	20.0	5
Secondary Target Temperature (°C)	0	0	0
Step Size (°C)	0	0	0
Step Delay (Cycles)	0	0	0
Acquisition Mode	None	Single	None

Melting Curve Analysis

Cycle Program Data	Value		
Cycles	1		
Analysis Mode	Melting Curves		
Temperature Targets	Segment 1	Segment 2	Segment 3
Target Temperature (°C)	95	35	85
Incubation time (s)	30	60	0
Temperature Transition Rate (°/s)	20.0	20.0	0.2
Secondary Target Temperature (°C)	0	0	0
Step Size (°C)	0	0	0
Step Delay (Cycles)	0	0	0
Acquisition Mode	None	None	Continuous

Cooling

Cycle Program Data	Value
Cycles	1
Analysis Mode	None
Temperature Targets	Segment 1
Target Temperature (°C)	40
Incubation time (s)	30
Temperature Transition Rate (°/s)	20.0
Secondary Target Temperature (°C)	0
Step Size (°C)	0
Step Delay (Cycles)	0
Acquisition Mode	None

LC Program Version and Fluorescence Display Mode

Developed with LC Program Version 3.5. Use F2/F1 or preferably F2 with colour compensation.

5. Typical results

Introduction

Use the Melting Curve program to genotype the human genomic DNA research samples. The melting peaks allow discrimination between the homozygous (wild type or mutant) and the heterozygous samples. Figure 1 shows a typical result obtained with the AMHR2 A-482G ToolSet™ for LightCycler™ :

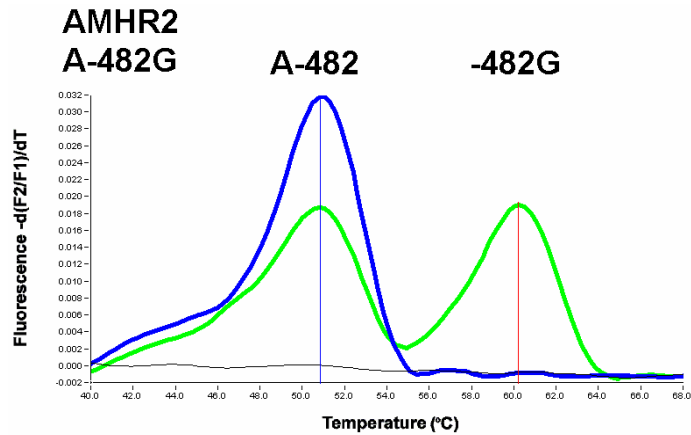


Figure 1 : Melting curve analysis of genotypes at nt position -482 of the AMHR2 gene.

BLUE : Homozygote for AA-482 (wild type),

GREEN : Heterozygote for A-482G (Control DNA contained in the ToolSet, Control AMHR2 A-482G-16).

BLACK : No DNA control. Red Cursor : $T_m = 60.2$ °C, Blue Cursor : $T_m = 50.8$ °C

Conditions : Digital Filter enabled, Calculation Method : Polynomial, Degrees to average : 10.

Note : The values for the respective melting temperatures may vary for ± 2.5 °C between different experiments. The Delta T between the melting peaks for different genotypes may vary ± 0.5 °C. The AMHR2 A-482G ToolSet™ has been developed for and validated with the LightCycler™ and its original accessory materials and reagents. Performance of the ToolSet with other instruments, accessories and reagents has not been validated by Genes-4U.

7. Notices to Purchaser

Licenses and Trademarks, Prohibition of Resale

Genes-4U ToolSets™ for LightCycler™ are produced and marketed under license from Roche Diagnostics GmbH. The purchase of this product does not convey any right for its use in clinical diagnostics. No license to use the PCR process is conveyed expressly or by implication by purchase of this product.

The LightCycler technology is licensed from Idaho Technology Inc., Idaho Falls, ID, USA.

LightCycler and High Pure are trademarks of members of the Roche group.

Resale of Genes-4U's products is expressly prohibited.

How to contact Genes-4U

E-mail info@Genes-4U.com

Internet <http://www.Genes-4u.com>